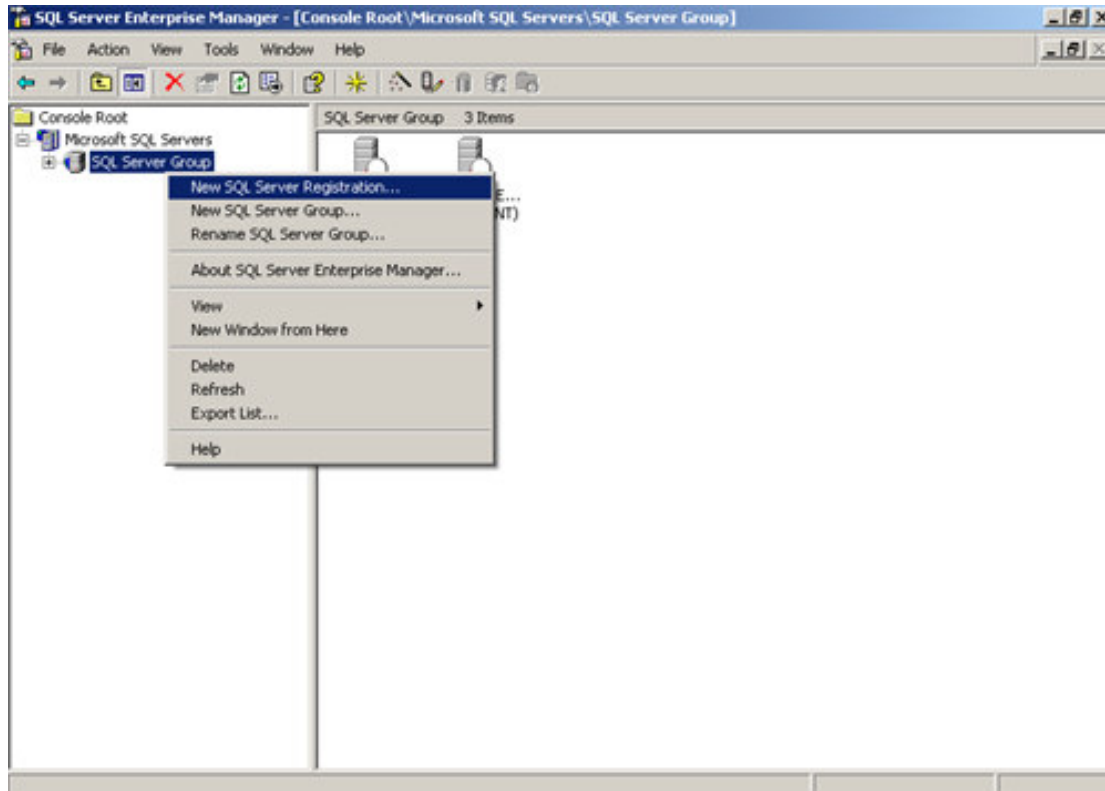
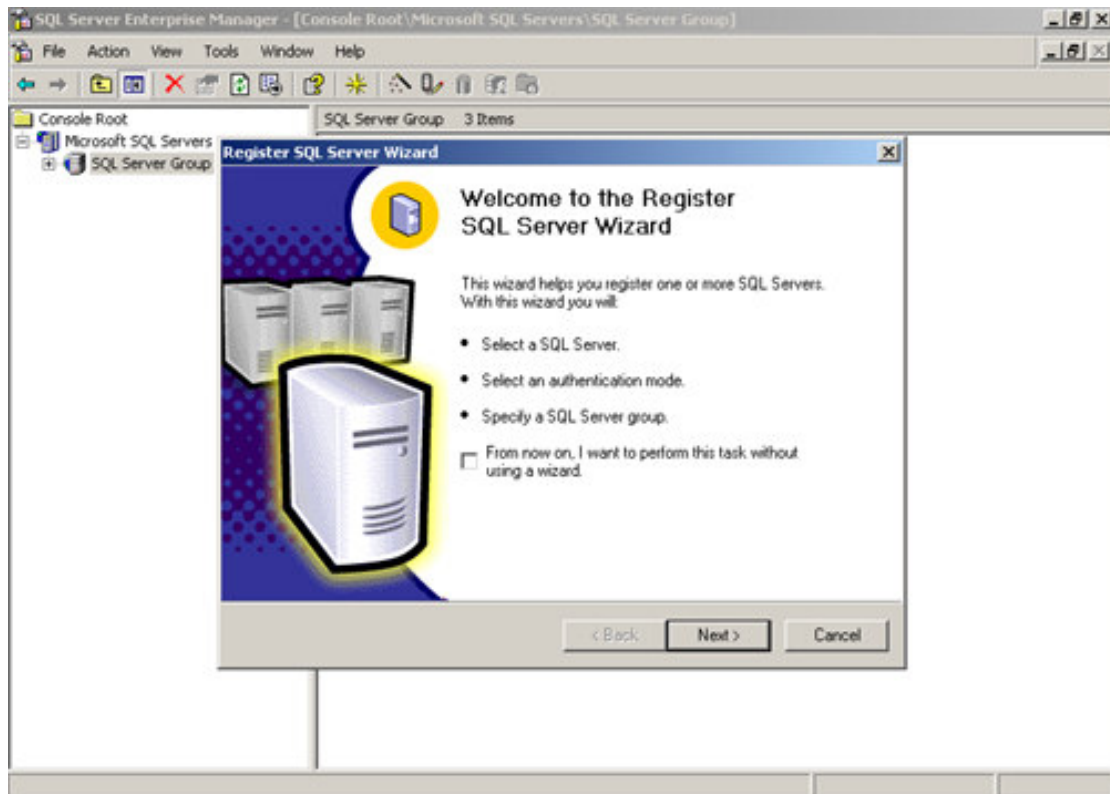


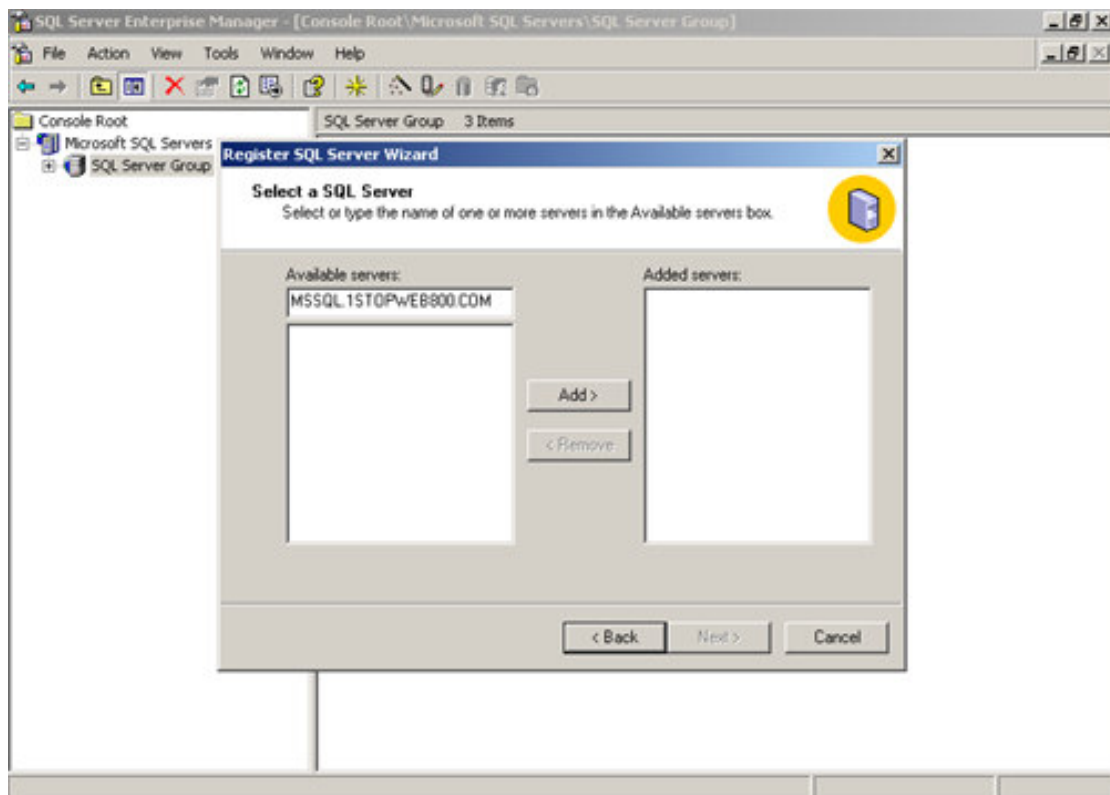
User Manual – New SQL Server Registration Guide



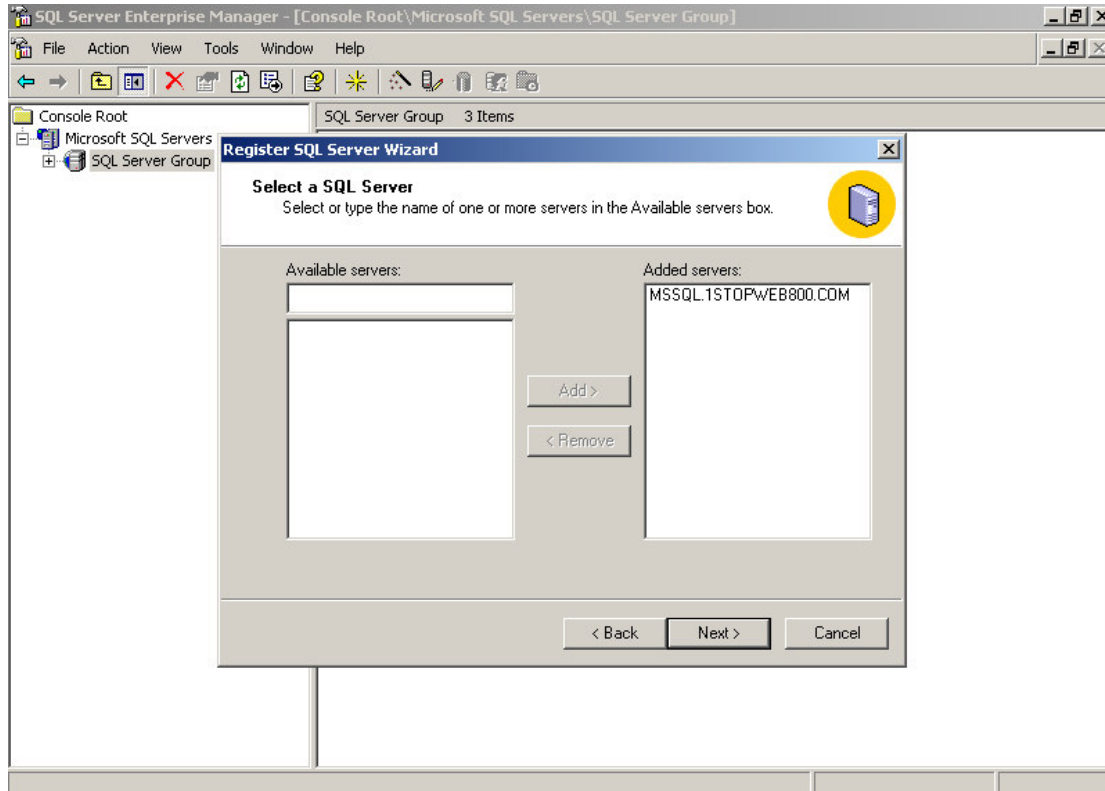
Getting Started with Enterprise Manager, use the Start Menu to launch SQL Server's Enterprise Manager. Right click SQL Server Group, select New SQL Server Registration, the wizard will display.



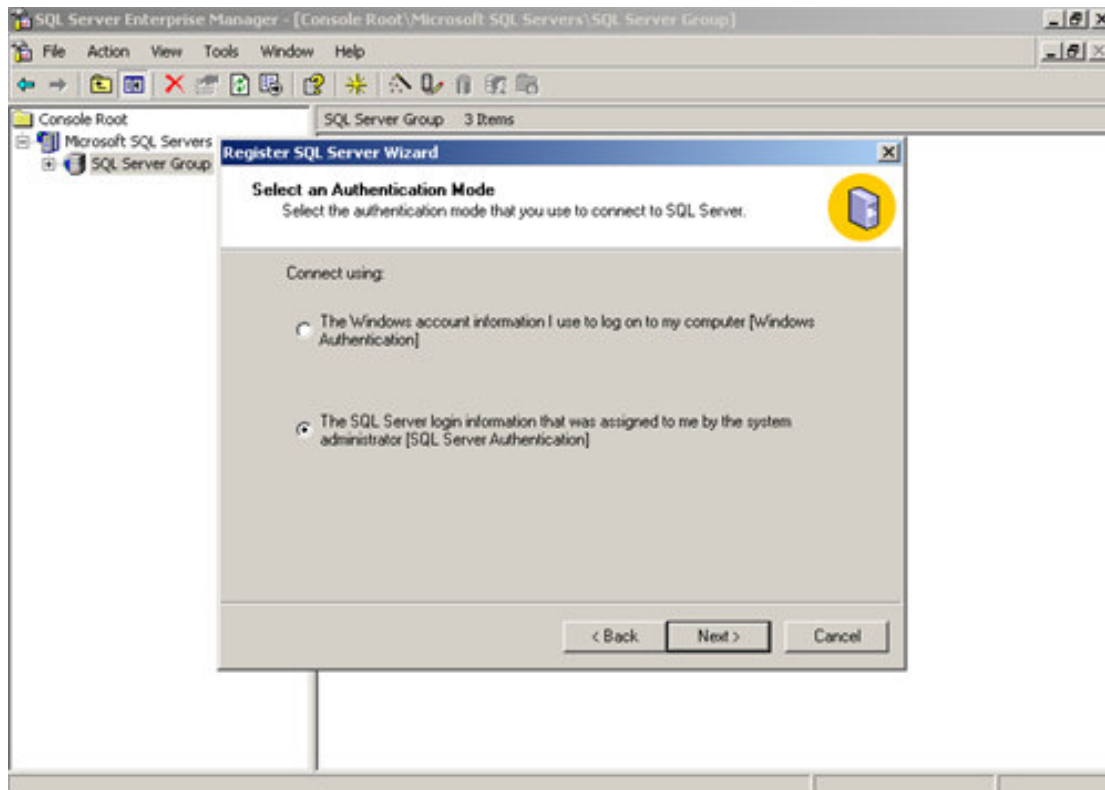
This is "Register SQL Server Wizard" click on Next to proceed.



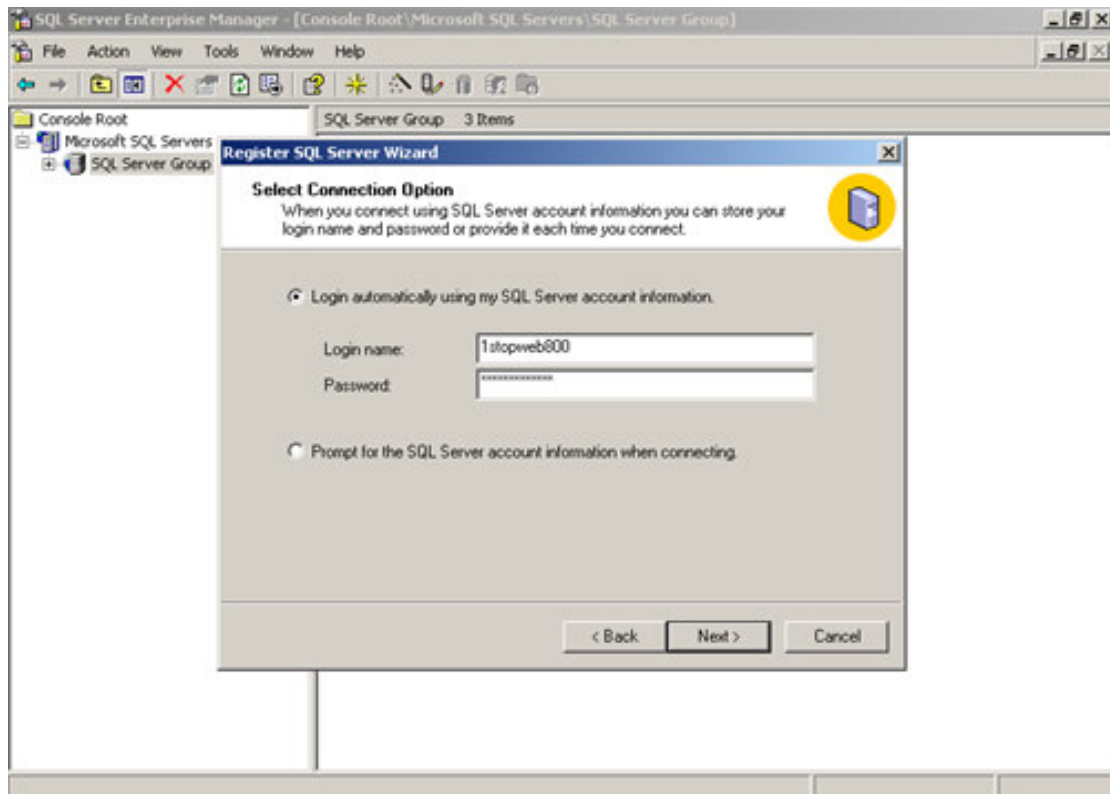
Type the remote host, for example MSSQL.yourdomain.com. Note that the host name is not case-sensitive. You will get the host name when you purchase the MS SQL hosting with us.



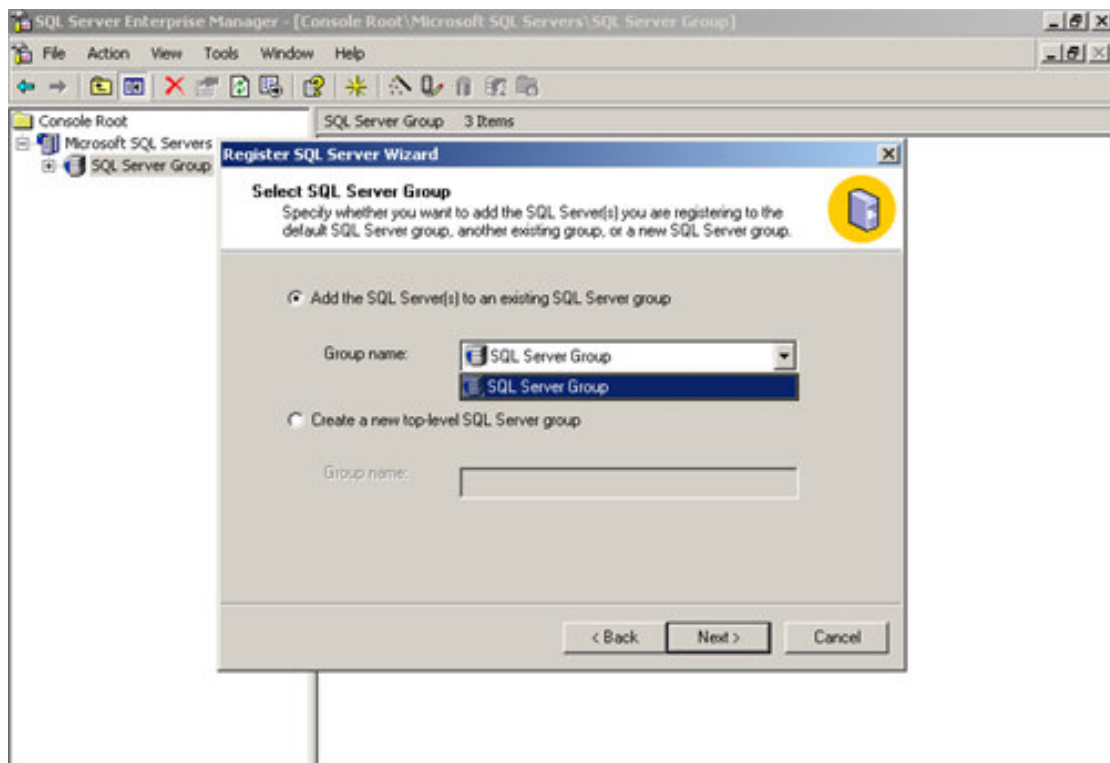
After done typing your host name, click on the button of “Add >” and the new entered host will now display in the panel of “Added servers”. Click Next to proceed.



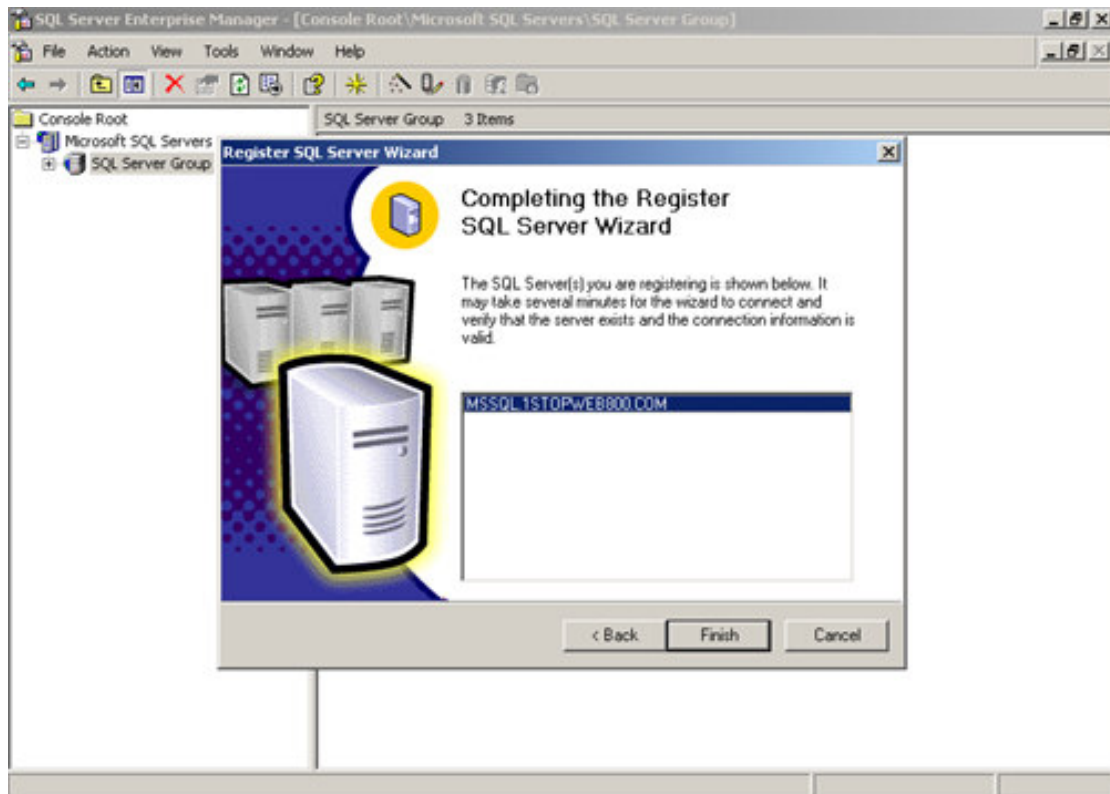
Select the option as show on above screen shot.



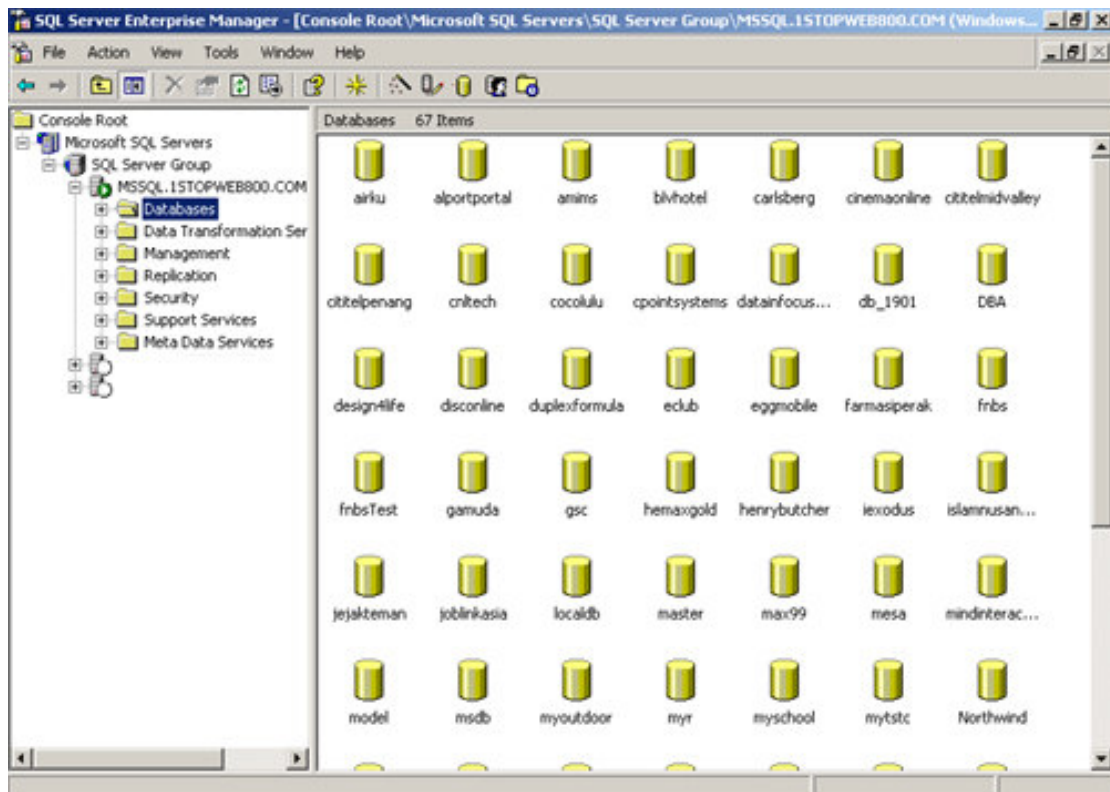
Enter the given username and password. Click on Next.



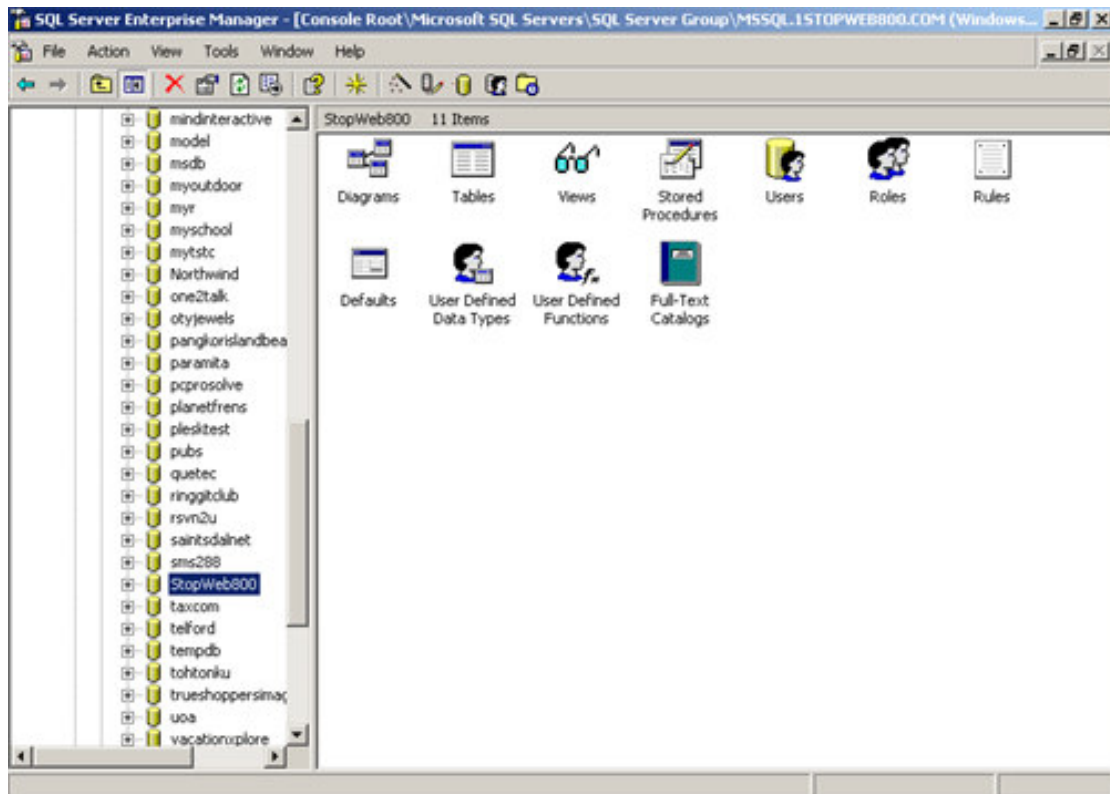
Select the group name where you want to put this new registered server, you can just put it under the default group which is "SQL Server Group". Click on Next.



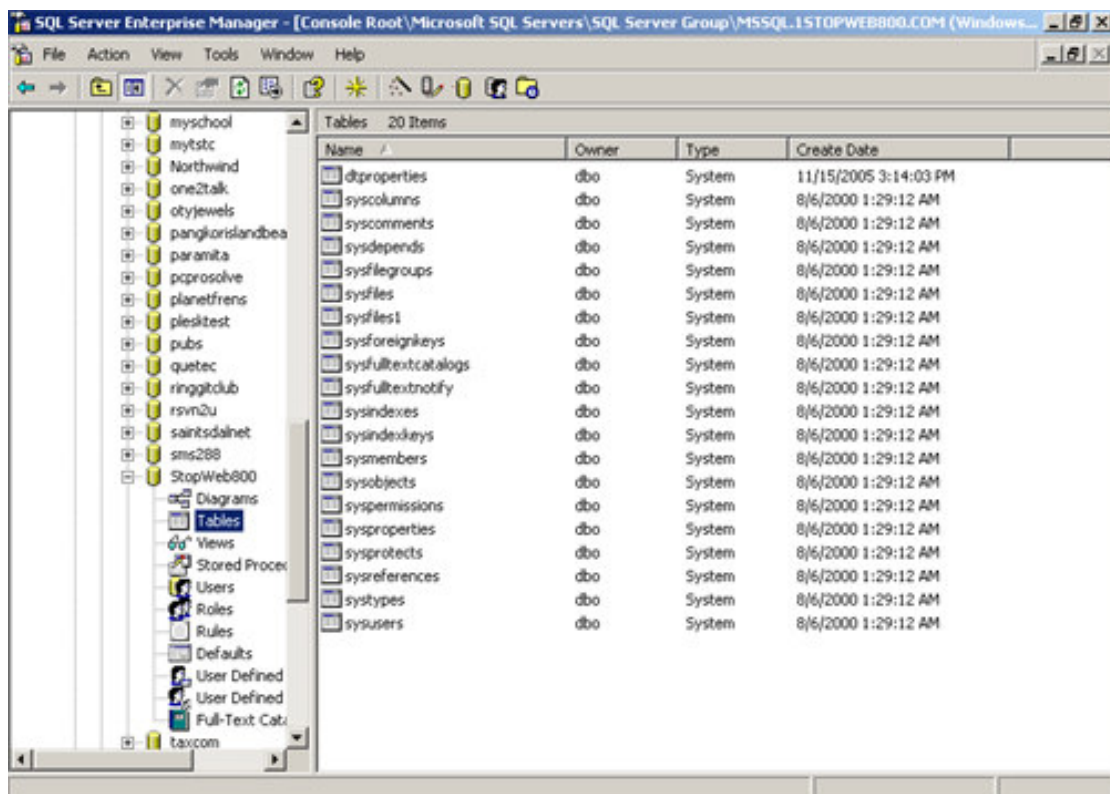
Completion screen. Click on Finish button and wait the wizard to connect. You will be prompted when connection is successfully.



You are now created and connected to your remote SQL server. Click on the '+' to expand the folder of "Databases"



You will be able to see many databases from other domain, you can just see but cannot alter it. Find your database, it will be named as your username, for example our username is 'stopweb800' so the database name is 'stopweb800'. Click on it.



Click on the '+' to expand, go to the "Table". You are done, you can now use the database.